

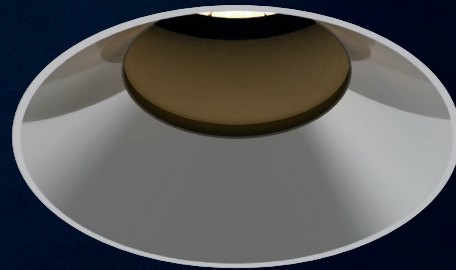
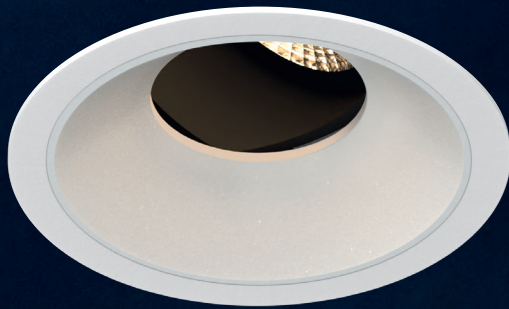
Reduced Glare

ELR®

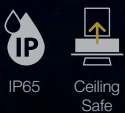
VASARI PRO

DOWNLIGHT SERIES

An expansion to the Vasari downlight series, designed with a narrower trim and deeper aperture for better glare control. The Vasari Pro downlight is equipped with a regression tilt mechanism that allows up to 35 degrees tilting adjustment, offering versatility for various applications.



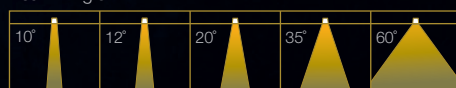
Fixture Features



Module Colour Temperature Variation



Beam Angle

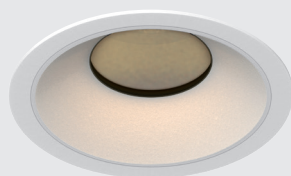


Driver Dimming Variation

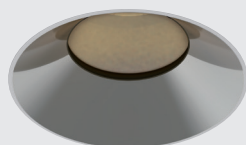


VASARI 3 PRO SL 65

RECESSED ROUND FIX / TILT DOWNLIGHT LUMINAIRE



#ROUND
#TRIM



#ROUND
#TRIMLESS

TECHNOLOGY AND FEATURES



Advanced Thermal Protection System



Low Flicker, No Risk (IEEE 1789)



Converging Optical Lens Maximising LOR



Ceiling Safe

AVAILABLE OPTIONS

FITTURE COLOUR OPTIONS	Trim Colour Options	Reflector Colour Options				
		MATT WHITE RAL9003	MATT BLACK RAL9011	CHROME	CHROME BLACK	CHROME GOLD
MATT WHITE RAL9003						

ACCESSORIES	<p>MR16 Holder GU10 Holder</p>
-------------	------------------------------------

LED MODULE	Module Options										Beam Angles				
	50PM/CM	50P/C	35P	50N	35N	COIN	35P-HI	50N-HI	35N-HI	COIN-HI	MR16/GU10	10°	20°	35°	60°
<p>*Drivers for 24CV LED modules are sold separately.</p> <p>SINGLE CCT 2700K 3000K 3500K 4000K 5000K ProART ProART98</p>	<p>50PM / 50CM / 50P / 50C / 35P / 50N / 35N / COIN</p>										✓	✓	✓	✓	
	<p>35P-HI / 50N-HI / 35N-HI / COIN-HI</p>										✓				
ComfySHIFT	<p>ComfySHIFT</p>										35P / 50N	✓	✓	✓	✓
WARM DIM	<p>WARM DIM</p>										50P / 35P / 50N / 35N / COIN	✓	✓	✓	✓
tuneWHITE	<p>tuneWHITE</p>										50P / 50N / COIN				
flexiK	<p>flexiK</p>											✓	✓	✓	
RGBW	<p>RGBW</p>										50P			✓	✓

DRIVER DIMMING	(ND) (PH) (AN) (DA)
----------------	--

VASARI 3 PRO SL

IP 65

- #ROUND
- #FIX
- #TILT
- #TRIM
- #TRIMLESS

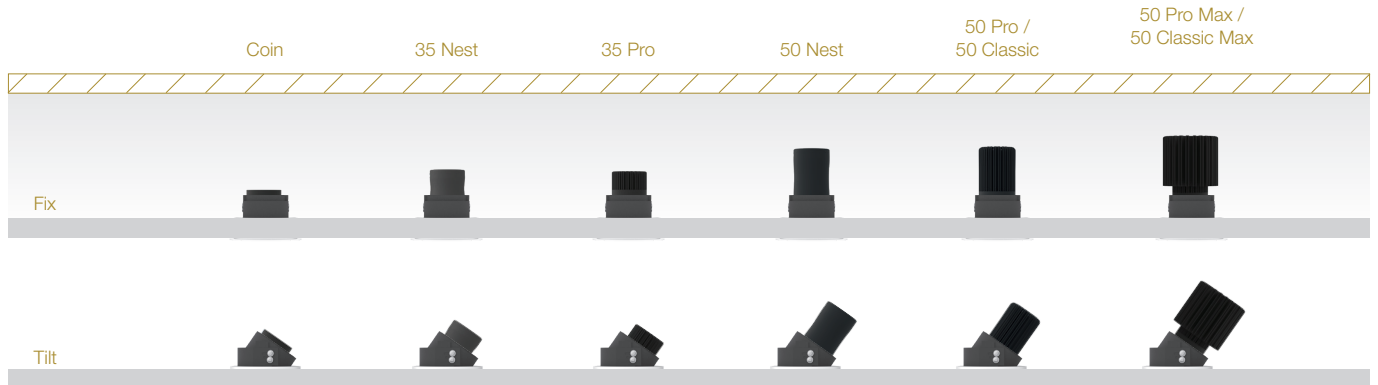
SPECIFICATIONS

FIXTURE

Family Type	Vasari Pro series
Fixture Colours	Matt white, matt black
Reflector Colours	Matt white, matt black, chrome, chrome black, chrome gold
Fixture Materials	Aluminium
Ingress Protection	IP65 (Fixture Face Only)

LED MODULE & DRIVER

Compatible LED Modules	50, 35, COIN series LED modules or MR16/GU10
Lifetime	Up to 50,000 hours L80 lamp life with LM80 tested LED chip packages
Beam Angles	10°, 20°, 35°, 60°
Colour Temperatures	2700K, 3000K, 3500K, 4000K, 5000K, ComfySHIFT, Warm Dim, tuneWHITE, flexiK, RGBW
CRI	High Efficiency (CRI-85), ProART (CRI-95), ProART98 (CRI-98)
Driver (Dimming)	Non-dim, phase (leading & trailing edge), 0-10V, DALI

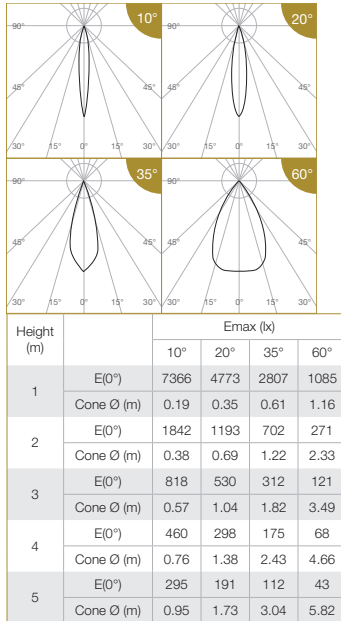


DIMENSIONS (MM)		Height (h)		<i>Height increase with accessories:</i> Anti-Glare Louvre : Height +6 Soft Lens : Height +3 Linear Spread Lens : Height +3 Comfort Pro : Height +20 (refer to module driver dimensions)	
ROUND	Trim	Trimless	Module		
	Ø92	Ø80	Module		Fix
			50PM / 50CM:	139	139
			50P / 50C:	125	125
			50N:	122	122
			35P / 35N:	99	99
			COIN:	78	78
			50N-HI:	132	132
			35P-HI / 35N-HI:	109	109
			COIN-HI:	88	88
			MR16 / GU10	99	99

VASARI 3 PRO SL IP 65

PHOTOMETRICS

50 PRO



Correction Factor:

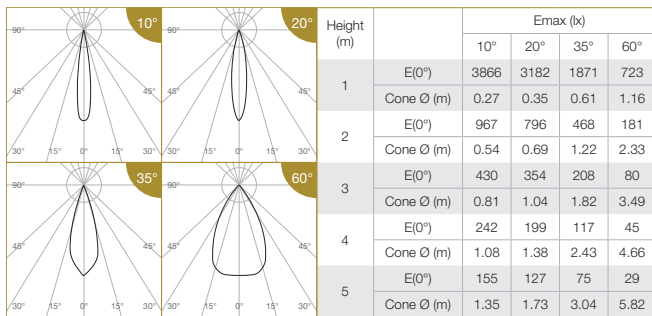
50P (10°) - f = 1.00	50P (20°; 35°; 60°) - f = 1.00
50C (10°) - f = 0.78	50C (20°; 35°; 60°) - f = 0.80
35P (10°) - f = 0.62	35P (20°; 35°; 60°) - f = 0.71
50N (10°) - f = 0.58	50N (20°; 35°; 60°) - f = 0.63
35N (10°) - f = 0.42	35N (20°; 35°; 60°) - f = 0.47
COIN (10°) - f = 0.35	COIN (20°; 35°; 60°) - f = 0.38
50PM (10°) - f = 1.69	50PM (20°; 35°; 60°) - f = 1.73
50CM (10°) - f = 1.37	50CM (20°; 35°; 60°) - f = 1.40
50P-24CV (10°) - f = 0.75	50P-24CV (20°; 35°; 60°) - f = 0.70
50C-24CV (10°) - f = 0.62	50C-24CV (20°; 35°; 60°) - f = 0.57
35P-24CV (10°) - f = 0.48	35P-24CV (20°; 35°; 60°) - f = 0.49
COIN-24CV (10°) - f = 0.28	COIN-24CV (20°; 35°; 60°) - f = 0.27

ELR LED Module				50P	50C	35P	50N	35N	COIN	50PM	50CM																					
LED Power				12W	10W	8W	7.5W	5.5W	4.5W	21W	17W																					
System Power				15.2W	12.8W	11W	10W	7.5W	6W	25W	21W																					
Luminous Flux (lm)	Type	Beam Angle	CRI																													
				High Efficiency Ra-85	ProART Ra-95	ProART98 Ra-98	High Efficiency Ra-85	ProART Ra-95	ProART98 Ra-98	High Efficiency Ra-85	ProART Ra-95	ProART98 Ra-98																				
	Single CCT (3000K)	10°	High Efficiency Ra-85	ProART Ra-95	ProART98 Ra-98	1027	806	640	593	435	356	1738	1406																			
														High Efficiency Ra-85	ProART Ra-95	ProART98 Ra-98	1305	1044	931	827	609	496	2262	1827								
																									High Efficiency Ra-85	ProART Ra-95	ProART98 Ra-98	1109	887	792	703	518
			High Efficiency Ra-85	ProART Ra-95	ProART98 Ra-98																											
														High Efficiency Ra-85	ProART Ra-95	ProART98 Ra-98	1320	1056	942	836	616	502	2288	1848								
																									High Efficiency Ra-85	ProART Ra-95	ProART98 Ra-98	1122	898	801	711	524
		High Efficiency Ra-85	ProART Ra-95	ProART98 Ra-98	924	739	659	585	431	351	1602	1294																				
													High Efficiency Ra-85	ProART Ra-95	ProART98 Ra-98	1350	1080	963	855	630	513	2340	1890									
High Efficiency Ra-85																								ProART Ra-95	ProART98 Ra-98	1148	918	819	727	536	437	1989
		High Efficiency Ra-85	ProART Ra-95	ProART98 Ra-98	945	756	674	599	441	359	1638	1323																				
	Input Power (24CV)												12W	10W	8W			4.5W														
Luminous Flux (lm)	Type												Beam Angle	CRI																		
		High Efficiency Ra-85	ProART Ra-95	ProART98 Ra-98	High Efficiency Ra-85	ProART Ra-95	ProART98 Ra-98	High Efficiency Ra-85	ProART Ra-95	ProART98 Ra-98																						
	24CV Single CCT (3000K)	10°	High Efficiency Ra-85	ProART Ra-95	ProART98 Ra-98	766	632	498																								
														High Efficiency Ra-85	ProART Ra-95	ProART98 Ra-98	914	748	644													
																									High Efficiency Ra-85	ProART Ra-95	ProART98 Ra-98	639	524	451		
			High Efficiency Ra-85	ProART Ra-95	ProART98 Ra-98																											
														High Efficiency Ra-85	ProART Ra-95	ProART98 Ra-98	647	530	456													
																								High Efficiency Ra-85	ProART Ra-95	ProART98 Ra-98	945	774	666			
		High Efficiency Ra-85	ProART Ra-95	ProART98 Ra-98	804	658	566																									
												High Efficiency Ra-85	ProART Ra-95	ProART98 Ra-98	662	542	466															

Data are based on 3000K (ProART CRI-95). Nominal data of 2700K and 3500K are shared with 3000K. Higher CCT of 4000K and 5000K will have a nominal data value of 5% higher than published. (f = 1.05) High Efficiency CRI-85 will have a nominal data value of 15% higher than published. (f = 1.17) ProART98 CRI-95 will have a nominal data value of 18% lower than published. (f = 0.82)

Nominal CRI-85, equals to Ra>80-87, R9>0
 Nominal CRI-95, equals to Ra>90-97, R9>50
 Nominal CRI-98, equals to Ra>97-99, R9>93

35 PRO ComfySHIFT



Correction Factor: 35P CS - f = 1.00
 50N CS - f = 0.94

ELR LED Module				35P	50N
LED Power				8W	7.5W
System Power				11W	10W
Luminous Flux (lm)	Type	Beam Angle	CRI		
				High Efficiency Ra-85	ProART Ra-95
	ComfySHIFT (3100K)	10°	20°		
		35°	60°		
		High Efficiency Ra-85	ProART Ra-95		

Data are based on maximum output at 3100K.
 Nominal CRI-95, equals to Ra>90-97, R9>50

VASARI 3 PRO SL

PHOTOMETRICS



50 PRO WARM DIM

Height (m)		Emax (lx)				ELR LED Module																
		10°	20°	35°	60°	50P		35P	50N	35N	COIN											
1	E(0°)	5822	4792	2818	1090	LED Power		12W	8W	7.5W	5.5W	4.5W										
	Cone Ø (m)	0.27	0.35	0.61	1.16	System Power		15.2W	11W	10W	7.5W	6W										
2	E(0°)	1456	1198	705	272	Luminous Flux (lm)	Type	Beam Angle	CRI	1011	672	632	466	379								
	Cone Ø (m)	0.54	0.69	1.22	2.33																	
3	E(0°)	647	532	313	121										Warm Dim (3100K)	10°	ProART Ra-95	1114	740	696	513	418
	Cone Ø (m)	0.81	1.04	1.82	3.49																	
4	E(0°)	364	300	176	68																	
	Cone Ø (m)	1.08	1.38	2.43	4.66																	
5	E(0°)	233	192	113	44	35°	1152	765	720	531	432											
	Cone Ø (m)	1.35	1.73	3.04	5.82																	
	E(0°)											60°										
	Cone Ø (m)																					

Correction Factor: 50P WD - f = 1.00
 35P WD - f = 0.66
 50N WD - f = 0.63
 35N WD - f = 0.46
 COIN WD - f = 0.38

Data are based on maximum output at 3100K.
 Nominal CRI-95, equals to Ra>90-97, R9>50

50 PRO tuneWHITE/flexiK

Height (m)		Emax (lx)			ELR LED Module												
		20°	35°	60°	50P		50N	COIN									
1	E(0°)	3744	2202	851	LED Power		12W	7.5W	4.5W								
	Cone Ø (m)	0.35	0.61	1.16	System Power		15.2W	10W	6W								
2	E(0°)	936	550	213	Luminous Flux (lm)	Type	Beam Angle	CRI	870	522	313						
	Cone Ø (m)	0.69	1.22	2.33													
3	E(0°)	416	245	95								tuneWHITE/flexiK (4000K / 6500K)	20°	ProART Ra-95	880	528	317
	Cone Ø (m)	1.04	1.82	3.49													
4	E(0°)	234	138	53													
	Cone Ø (m)	1.38	2.43	4.66													
5	E(0°)	150	88	34	60°												
	Cone Ø (m)	1.73	3.04	5.82													

Correction Factor: 50P TW / FK - f = 1.00
 50N TW / FK - f = 0.60
 COIN TW / FK - f = 0.36

Data are based on maximum output at highest CCT (4000K / 6500K).
 2700K will have a nominal data value of 10% lower than published. (f = 0.90)
 1800K will have a nominal data value of 30% lower than published. (f = 0.70)
 Nominal CRI-95, equals to Ra>90-97, R9>50

50 PRO RGBW

Height (m)		Emax (lx)		ELR LED Module									
		35°	60°	50P									
1	E(0°)	1332	515	LED Power		12W							
	Cone Ø (m)	0.61	1.16	System Power		15.2W							
2	E(0°)	333	129	Luminous Flux (lm)	Type	Beam Angle	CRI	N/A	532				
	Cone Ø (m)	1.21	2.33										
3	E(0°)	148	57							RGBW	35°	60°	545
	Cone Ø (m)	1.82	3.49										
4	E(0°)	83	32										
	Cone Ø (m)	2.43	4.66										
5	E(0°)	53	21										
	Cone Ø (m)	3.04	5.82										

Data are based on maximum output of all 4 RGBW channels.

35 PRO HIGH INTENSITY

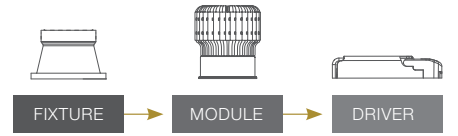
Height (m)		Emax (lx)	ELR LED Module														
		10°	35P-HI	50N-HI	35N-HI	COIN-HI											
1	E(0°)	9774	LED Power		8W	7.5W	5.5W	4.5W									
	Cone Ø (m)	0.19	System Power		11W	10W	7.5W	6W									
2	E(0°)	2443	Luminous Flux (lm)	Type	Beam Angle	CRI	541	508	373	303							
	Cone Ø (m)	0.37															
3	E(0°)	1086									Single CCT (3000K)	10°	High Efficiency Ra-85	460	432	317	258
	Cone Ø (m)	0.56															
4	E(0°)	611															
	Cone Ø (m)	0.74															
5	E(0°)	391	ProART98 Ra-98														
	Cone Ø (m)	0.93															

Correction Factor: 35P-HI - f = 1.00
 50N-HI - f = 0.94
 35N-HI - f = 0.69
 COIN-HI - f = 0.56

Reduced Glare

VASARI 3 PRO SL 65

MODULAR CONCEPT



ORDERING MATRIX CHART

Fixture																		
Type	Trim Options		Shape		Angle		Colour		Reflector Colour		Accessories							
VASARI-3PRO-SL-IP65	T	Trim	RD	Round	FX	Fix	WH	Matt White	WH	Matt White	N	None						
	X	Trimless									TL	Tilt	MB	Matt Black	MB	Matt Black	CMB	COIN Module Bracket****
															CR	Chrome	MR16	MR16 Holder
															CB	Chrome Black	GU10	GU10 Holder
															CG	Chrome Gold		

****COIN Module Bracket accessory is necessary when paired with COIN LED module variants.

Single CCT LED Module						Driver	
LED Power	Beam Angle		Colour Temp		CRI	Dimming	
ELR50PM	21W	10°	27	2700K	HE Ra~85	ND	Non-Dim
ELR50CM	17W	20°	30	3000K	PA ProART	PH	Phase
ELR50P	12W	35°	35	3500K	PP ProART98	AN	0-10V
ELR50C	10W	60°	40	4000K		DA	DALI
ELR35P	8W		50	5000K			
ELR50N	7.5W						
ELR35N	5.5W						
ELRCOIN	4.5W						
ELR35P-HI	8W	NS 10°	27	2700K	HE Ra~85	ND	Non-Dim
ELR50N-HI	7.5W		30	3000K	PA ProART	PH	Phase
ELR35N-HI	5.5W		35	3500K	PP ProART98	AN	0-10V
ELRCOIN-HI	4.5W		40	4000K		DA	DALI
			50	5000K			
ELR50P-24CV	12W	10°	27	2700K	HE Ra~85		
ELR50C-24CV	10W	20°	30	3000K	PA ProART		
ELR35P-24CV	8W	35°	35	3500K	PP ProART98		
ELRCOIN-24CV	4.5W	60°	40	4000K			
			50	5000K			

*Drivers for 24CV LED modules are sold separately.

ComfySHIFT LED Module						Driver	
LED Power	Beam Angle		Colour Temp		CRI	Dimming	
ELR35P	8W	10°	CS	ComfySHIFT	PA ProART	ND	Non-Dim
ELR50N	7.5W	20°					
		35°					
		60°					

example: VASARI-3PRO-SL-IP65.T.RD.TL.WH.WH.N.ELR50P:35:27.PA.DA
*Custom RAL colour options available.

Warm Dim LED Module						Driver	
LED Power	Beam Angle		Colour Temp		CRI	Dimming	
ELR50P	12W	10°	WD	Warm Dim	PA ProART	PH	Phase
ELR35P	8W	20°				AN	0-10V
ELR50N	7.5W	35°				DA	DALI
ELR35N	5.5W	60°					
ELRCOIN	4.5W						

tuneWHITE LED Module						Driver	
LED Power	Beam Angle		Colour Temp		CRI	Dimming	
ELR50P	12W	20°	TW1831	tuneWHITE 1800K-3100K	PA ProART	DA	DALI
ELR50N	7.5W	35°	TW1840	tuneWHITE 1800K-4000K			
ELRCOIN	4.5W	60°	TW2765	tuneWHITE 2700K-6500K			

flexiK LED Module						Driver	
LED Power	Beam Angle		Colour Temp		CRI	Dimming	
ELR50P	12W	20°	FK##	flexiK	PA ProART	PH	Phase
ELR50N	7.5W	35°				AN	0-10V
ELRCOIN	4.5W	60°				DA	DALI

denotes the first two digits of preferred CCT ranging from 1800K to 6500K by increment of 100K.

RGBW LED Module					
LED Power	Beam Angle		Colour Temp		
ELR50P	12W	35°	RGBW	Red, Green, Blue, White	
		60°			

*Drivers for RGBW LED modules are sold separately.